

PUBLIC AUCTION

LIVE WEBCAST ONLY!! -- NO ON SITE BIDDING

INSPECTION: MONDAY * FEBRUARY 10TH * 9AM-4PM (OR BY APPT)

TUESDAY * FEBRUARY 11TH * 10:00 AM

COURT ORDERED RECEIVER SALE

CSR WORLDWIDE, INC. - PLASTIC RECYCLERS

473617 610 RD., WATTS, OK 74964



REAL ESTATE SELLS ABSOLUTE @ 10:00!!!

2010 68,000+/- SQ. FT. STEEL BUILDING W/FIRE SUPPRESSION SYSTEM & TRUCK SCALE LOCATED ON 50+/- ACRES!! EQUIPMENT WILL THEN BE AUCTIONED IN A 'BULK BID' OF ALL LOTS COMBINED. FINALLY, THE EQUIPMENT WILL BE OFFERED ON A 'PIECEMEAL' BASIS, LOT BY LOT. EQUIPMENT WILL BE SOLD TO EITHER BULK BID OR AGGREGATE, WHICHEVER TOTAL IS HIGHER. NO BUYERS PREMIUM ON REAL ESTATE.



PLASTIC SCRAP!

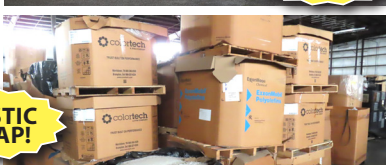


2007!

LINDNER METEOR 2200 SHREDDER!!



S.S. TANKS!



LINDNER KOMET 1800 SHREDDER!

2007!



JLG E450AJ BOOM LIFT

2013!!



PTI G6000 PELLET LINE!!

2022!!



JLG 4069LE SCISSOR LIFT



PTI SLIP SHEET LINE

(8) CHILL ROLLS!



CHOOSE FROM (7)!!!

53' REEFERS!



Online Bidders
Register 24 Hours Prior To Auction • Buyers Premium Will Apply
See duckwallauctions.com For More Details

918.836.3611 OFFICE
duckwallauctions.com
918.205.9033 FAX
P.O. Box 580187 • Tulsa Ok 74158

PRINCIPAL AUCTIONEER:
DANIEL R DUCKWALL
BROKER • TAMMY L. DUCKWALL #150116

PUBLIC AUCTION

LIVE WEBCAST ONLY!!! -- NO ON SITE BIDDING

INSPECTION: MONDAY FEBRUARY 10TH 9AM-4PM (OR BY APPT)

REAL ESTATE: REAL ESTATE WILL BE OFFERED AT 10:00 AM!!! EQUIPMENT WILL THEN BE AUCTIONED IN A 'BULK BID' OF ALL LOTS COMBINED. FINALLY, THE EQUIPMENT WILL BE OFFERED ON A 'PIECEMEAL' BASIS, LOT BY LOT. EQUIPMENT WILL BE SOLD TO EITHER BULK BID OR AGGREGATE, WHICHEVER TOTAL IS HIGHER.

SHREDDERS: 2007 LINDNER METEOR 2200 SHREDDER LINE, DUAL 132KW ELEC. MOTORS, MERI/VOTH SLAT BELT 78" INCLINE INFEED & OUTFEED CONVEYORS * 2007 LINDNER KOMET 1800 SHREDDER LINE, 200KW, INCLINED INFEED/OUTFEED CONVEYORS, TIPPER HOPPER * **HERBOLD** 350 HP SHREDDER, INCLINED BELT CONVEYOR (NEEDS REPAIR) *

PELLET EXTRUSION LINE: 2022 PTI M# G6000 EXTRUDER, TITAN/ABB CONTROL, 6" 32:1 L/D, 8-ZONE, 373 KW, ADG SOLUTIONS CFO 90 DEG. PELLETIZING EXTRUDER HEAD, COLD SHOT CHILLER, ROTEX 242-A 44" X 60" SCREENER, CYCLONIC BLOWER, INCLINED CONVEYOR, TIPPER

SLIP SHEET LINE: PTI M# R683018 SLIP SHEET LINE, (UNASSEMBLED), TITAN PLC CONTROL, UNION OFFICINE SINGLE BARREL 5" 8-ZONE EXTRUDER, 32:1 L/D, 05-24413 SLIP SHEET DIE ADAPTER, ADI 72" SHEET DIE, 2006 PTI M# R683018 POWERED 3-ROLL STAND, (8) 17" - 24" DIA. X 68" CHILL ROLLS, COOLANT SYSTEM, PARKINSON 1986 72" 3-REEL WINDER, COREFINE 66 X 110 ROTARY DIE CUTTER, GREENLINE STACKER * NORDSON 32" H.D.M. SHEET DIE

EXTRUDERS: PRODEX M# 6000-24 6" EXTRUDER * CROWN PRODUCTS 6" * PRODEX M# TMH 600-30 6" TORQUE MASTER * DAVIS-STANDARD 3.5" M# THERMATIC III (350S) * GEART HARREL 2" * DAVIS-STANDARD MARK V 2.5"

SCISSOR LIFTS & MALLIFTS: 2013 JLG M# E450AJ ELEC. BOOM LIFT, 1,162 HOURS, 45' WORK HEIGHT * 2013 GENIE M# Z-60/34 DIESEL BOOM LIFT, 60' WORK HEIGHT, 4X4 * 2013 JLG M# 4069LE ELEC. SCISSOR LIFT, 40' WORK HEIGHT, 438 HOURS * (2) JLG M# 1932E3 SCISSOR LIFTS

SKID STEER: 2002 CASE M# 60XT SKID STEER, RUBBER TIRE (NEEDS DRIVE MOTORS)

FORKLIFTS: CATERPILLAR M# E3000 ELEC. FORKLIFT, 2,400 LB. CAP, HARD TIRES, SIDE SHIFT, 40" FORKS * HYSTER H80E FORKLIFT, 8,000 LB CAP, (NOT RUNNING) * CATERPILLAR M# 2EP600 ELEC. FORKLIFT,

WEDNESDAY * FEBRUARY 11TH * 10:00 AM

COURT ORDERED RECEIVER SALE

CSR WORLWIDE, INC. - PLASTIC RECYCLERS

473617 610 RD., WATTS, OK 74964

6,000 LB., SOLID TIRES, FORK POSITIONING, SIDE SHIFT, 38" FORKS (NEEDS BATTERIES) * CROWN ELEC. FORKLIFT, M# N/A, S/N A16318 * CHARGERS

RECYCLING MATERIAL: APPROX. 300,000 LBS OF REJECT PVC TUBING * PLASTIC PELLETS * PVC EXTRUSIONS * PLASTIC SHEETING * PLASTIC PALLETS & WASTE CONTAINERS

MISC: MGD 48" GUILLONTINE SHEAR * APPROX. 10' DIA. X 30' TROMMEL SCREEN * (3) INDUSTRIAL MAGNETICS & ERIEZ SUSPENDED MAGNETIC SEPARATORS * BUILT TUFF BOX BAILER * (16) STORAGE SILOS * ROOTS BLOWER UNITS * (2) SUPER SACK FILL STATIONS * AIR COMPRESSORS & DRYERS * BENCH TOP FURNACES * PORTACOOOL FAN * PLATFORM SCALE * B.A.C. & MARLEY COOLING TOWERS * MISC. PARTS & COMPONENTS * FIRE SUPPRESSION PIPING * ELECTRICAL CONDUIT & EQUIPMENT * MAINTENANCE EQUIPMENT * OFFICE FURNITURE & EQUIPMENT

ROLLING STOCK: 2006 FORD F150 XLT, 5.4L TRITON, CREW CAB * 2013 KAWASAKI MULE 4010 (NON-RUNNING)

TRAILERS: (7) '05-'06 GREAT DANE & UTILITY 53' REEFER TRAILERS (LOCATED IN LINCOLN NE.) * 53' STORAGE TRAILER

TERMS: BUYERS PREMIUM - 18% Online. FULL PAYMENT MUST BE MADE DAY OF AUCTION. We accept cash, check with bank letter of guarantee, or wire transfer. NO credit cards will be accepted! Sales tax will be charged without tax exemption being submitted to Duckwall & Co., Inc. Register online at Bidspotter.com 24 hours prior to sale!

ITEMS MUST BE REMOVED BY FRIDAY, FEBRUARY 21ST.

ALL SALES FINAL. AS IS - WHERE IS, NO WARRANTIES OR RETURNS.

REAL ESTATE WILL SELL 'ABSOLUTE' AT 10:00 AM!!

2010 68,000 +/- SQ. FT. STEEL BUILDING W/FIRE SUPPRESSION SYSTEM & TRUCK SCALE LOCATED ON 50 +/- ACRES!!

EQUIPMENT WILL THEN BE AUCTIONED IN A 'BULK BID' OF ALL LOTS COMBINED. FINALLY, THE EQUIPMENT WILL BE OFFERED ON A 'PIECEMEAL' BASIS, LOT BY LOT. EQUIPMENT WILL BE SOLD TO EITHER BULK BID OR AGGREGATE, WHICHEVER TOTAL IS HIGHER. NO BUYERS PREMIUM ON REAL ESTATE.

DUCKWALL & COMPANY, INC.
AUCTIONEERS • APPRAISERS

P.O. Box 580187 • Tulsa Ok 74158

918.836.3611 OFFICE • 918.205.9033 FAX



FIRST CLASS MAIL

DATED MATERIAL - PLEASE DELIVER PROMPTLY

For complete catalog and photos of all items, visit our website

duckwallauctions.com



UNABLE TO ATTEND?
"HOW TO ESTABLISH CREDIT & BID ONLINE"

Online bidders must be registered with all correspondence completed, 24 hours prior to auction. Failure to register and/or failure to send deposit or bank letter of guarantee to Duckwall & Co., Inc. will disqualify you from bidding. NO EXCEPTIONS PLEASE! Register as an ONLINE BIDDER through BIDSPOTTER.COM, 24 hours prior to auction to allow time to be approved. IF THERE IS NO BIDDER HISTORY with Bidspotter or insufficient history, there will be a \$2500 refundable deposit required in order to register & bid. Bidspotter link can be found via our website. www.duckwallauctions.com. "Plan on being tax exempt? Great! Please send tax exemption when you register to duckwall@duckwallauctions.net." To "bid by proxy", credit must be established or bid will not be accepted. ONLINE BIDS SUBJECT TO 18% BUYERS PREMIUM